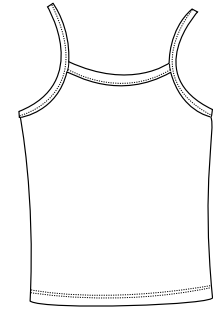
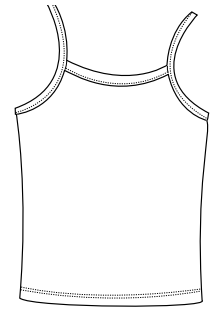


Ladies Spaghetti Strap Tank



Front



Back

DT202

- * 5.9-ounce * 100% ring spun combed cotton * Form fitting 1 x 1 rib construction
- * Self-binding arm straps

Care Instructions:

Machine wash cold, wash inside out, wash with like colors. Do not bleach. Tumble dry low. Warm iron if necessary

Finished Measurements in Inches

| Size | S | M | L | XL | XXL | Plus 1X | Plus 2X |
|-------|-------|-------|-------|-------|-------|---------|---------|
| Chest | 12.25 | 13.25 | 14.25 | 15.25 | 16.25 | 19.25 | 21.25 |
| Body | 15.5 | 16 | 16.5 | 17 | 17.5 | 20 | 22 |
| Strap | 8.25 | 8.5 | 8.75 | 9 | 9.25 | 10 | 10.5 |

Chest width measured 1" below armhole. Body length measured from center back to hem.
Strap measured relaxed.

Colors

| | |
|--|--------------|
| | Baby Blue |
| | Black |
| | Bright Green |
| | Fuchsia |
| | Pink |
| | Red |
| | White |

Please Note:

Colors shown are approximate and for reference only. For closest match see PMS colors, or for exact match, returnable samples and grommited samples are available.

Color Chart

| Colors | Baby Blue | Black | Bright Green | Fuchsia | Pink | Red | White |
|-------------|-----------|-----------|--------------|-----------|-----------|-----------|-----------|
| Textile PMS | 15-4020TC | 19-4203TC | 15-5534TC | 17-1842TC | 13-1906TC | 19-1664TC | 11-0601TC |
| General PMS | 283C | No Match | 7482C | 214C | 1895C | 186C | No Match |