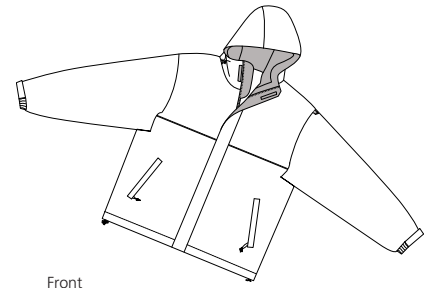
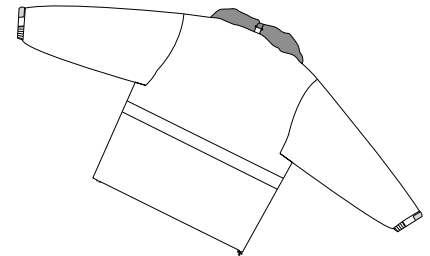


Rainier Ripstop Jacket

PORT AUTHORITY®



Front



Back

J773

- * 100% nylon ripstop shell * 100% polyester lining * water resistant
- * Lower slash zippered pockets * Open bottom hem with drawcord and toggles
- * Attached hood * Adjustable cuffs * Packable pocket at back * Inside pocket
- * Port pocket access

Care Instructions:

Machine wash cold. Tumble dry low.
Cool iron if needed. Do not bleach





Finished Measurements in Inches

Size	XS	S	M	L	XL	2XL	3XL	4XL
Length	28.5	29.5	29.5	30	30.5	31	31.5	32
Chest	22.5	24	25.5	27	28.5	30	31.5	33
Sleeve	32.5	34	36	37	38	38.5	39	40
Pack Pocket	12	12	12	12	12	12	12	12
Areas for Decoration	Left Chest, Full Back		Port Pocket™		Left Underarm, Mid Back Lining			

Packable pocket measured width. Chest width measured 1" below arm hole.

Body length measured from back neck seam to hem. Sleeve length measured from center back seam to hem.

Colors

	Black
	Navy
	Red
	Royal

Please Note:

Colors shown are approximate and for reference only. For closest match see PMS colors, or for exact match, returnable samples and grommets are available.

Color Chart

Colors	Black	Navy	Red	Royal
Textile PMS	19-4005TC	19-4025TC	19-1664TC	19-4057TC
General PMS	426C	533C	187C	541C