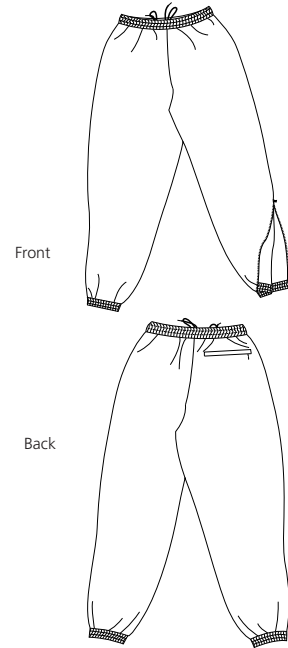


# Nylon Pant

**Sport-Tek™**  
By Port Authority®



## JP74

- \* 100% nylon outer \* Poly/cotton jersey lining from the knees to waist
- \* Nylon lines the lower leg \* Triple-needle stitching in the waistband \* Drawstring
- \* Extended leg zipper \* Elastic cuffs \* Side-seam pockets \* Back zippered pocket

### Care Instructions:

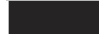
Machine wash cold with like colors. Do not bleach. Line dry. Do not iron. Do not dry clean

### Finished Measurements in Inches

Size	XS	S	M	L	XL	2XL	3XL	4XL
Waist	24-26	28-30	32-34	36-38	40-42	44-46	48-50	52-54
Inseam	30	31	32	32	33	33.5	34	34.5
Cuff	8	8.5	9	9.75	10.5	11	11.5	12

Waist measured relaxed. Cuff measured relaxed.

### Colors

	Black
	Dark Navy
	Hunter
	Red
	Royal

### Please Note:

Colors shown are approximate and for reference only. For closest match see PMS colors, or for exact match, returnable samples and grommited samples are available.

### Color Chart

Colors	Black	Dark Navy	Hunter	Red	Royal
Textile PMS	19-4006TC	19-4023TC	19-5212TC	19-1656TC	19-3864TC
General PMS	426C	532C	5467C	202C	661C