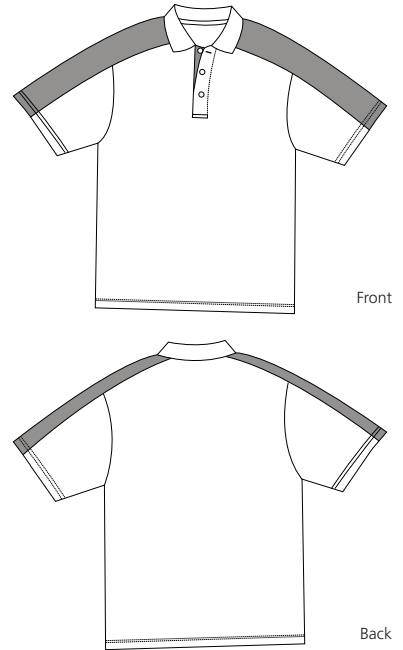


# Pique Knit Sport Shirt with Contrast Shoulder Panel

**Sport-Tek**  
By Port Authority®



## K476

- \* 6.2-ounce \* 100% ring spun combed cotton \* Double-needle stitched throughout
- \* Side vents \* Side seams \* Hemmed sleeves \* Welt collar
- \* Metal buttons with dyed-to-match plastic rims

**Care Instructions:**  
Machine wash cold with like colors.  
Do not bleach.  
Tumble dry low.  
Warm iron if necessary.

Finished Measurements in Inches								
Size	XS	S	M	L	XL	2XL	3XL	4XL
Width	19.5	20.5	21.5	23.5	25.5	27	28.5	30
Length	25.5	26.5	30	31	32	33	33.5	34
Sleeve	9	9.5	11	11.5	12	12.5	13	13.5
Neck	15.5	16	16.5	17	17.5	18	18.5	19

Chest width measured 1" below armhole. Body length measured from center back neck seam to hem. Sleeve length measured from shoulder seam to hem. Neck measured by circumference.

Colors			
	Black/White		Oxford/Black
	Dark Green/White		Red/White
	Maroon/White		Royal/White
	Navy/White		White/Navy

**Please Note:**  
Colors shown are approximate and for reference only. For closest match see PMS colors, or for exact match, returnable samples and grommited samples are available.

Color Chart								
Colors	Black	Dark Green	Maroon	Navy	Oxford	Red	Royal	White
Textile PMS	19-4006tC	19-5414TC	19-1522TC	19-4024TC	No Match	19-1761TC	19-4044TC	11-0601TC
General PMS	Process Black	560C	229C	533C	No Match	201C	294C	No Match
Colors	Black	Navy	White					
Textile PMS	19-4006tC	19-4024TC	11-0601TC					
General PMS	Process Black	533C	No Match					