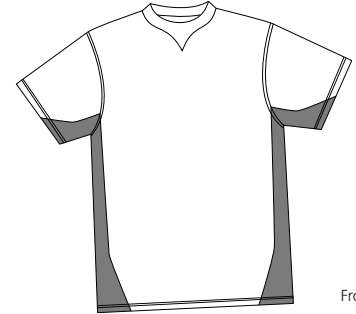
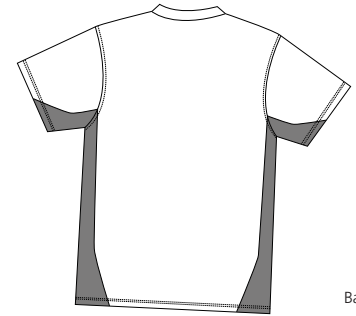


Side-Panel Pique Crew T

Sport-Tek
By Port Authority®



Front



Back

K479

- * 6.2-ounce * 100% ring spun combed cotton * Double-needle stitched throughout
- * Side vents * Side seams * Knit collar with v-notch * Contrast side panel

Care Instructions:

Machine wash cold with like colors.
Do not bleach.
Tumble dry low.
Warm iron if necessary.

Finished Measurements in Inches

Size	XS	S	M	L	XL	2XL	3XL	4XL
Width	16	18	20	22	24	26	28	30
Length	26	27	29	30	31	33	34	35
Sleeve	7	7.5	8	8.5	9	9.5	10	10.5
Neck	6.75	6.75	6.75	7.25	7.25	7.75	7.75	7.5

Chest width measured 1" below armhole. Body length measured from high point shoulder to hem.
Sleeve length measured from shoulder seam to hem. Neck width measured seam to seam.

Colors

	White/Black
	White/Navy
	White/Red
	White/Royal

Please Note:

Colors shown are approximate and for reference only. For closest match see PMS colors, or for exact match, returnable samples and grommeted samples are available.

Color Chart

Colors	Black	Navy	Red	Royal
Textile PMS	19-4006TC	19-4024TC	19-1761TC	19-4044TC
General PMS	Process Black	533C	201C	294C