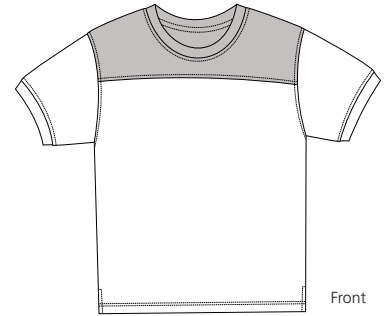


Vintage Football Jersey

Sport-Tek™
By Port Authority®



K481

- * 6.8-ounce * 100% ring spun combed cotton * Jersey knit
- * Double-needle armhole and bottom hem * Side vents

Care Instructions:


Machine wash cold, wash with like colors. Do not bleach. Tumble dry low. Warm iron if necessary.

Finished Measurements in Inches

| Size | XS | S | M | L | XL | 2X | 3X | 4X |
|--------|------|------|------|------|------|-------|-------|-------|
| Chest | 16 | 18 | 20 | 22 | 24 | 26 | 28 | 30 |
| Length | 25 | 27 | 29 | 30 | 31.5 | 33 | 34.5 | 36 |
| Sleeve | 7.25 | 7.75 | 8.25 | 8.75 | 9.75 | 10.75 | 10.25 | 10.75 |
| Neck | 7.25 | 7.25 | 7.25 | 7.75 | 7.75 | 8.25 | 8.25 | 8.25 |

Chest width measured 1" below armhole. Front body length measured from high point shoulder to hem. Sleeve length measured from shoulder seam to hem. Neck width measured seam to seam.

Colors

| | | |
|---|---|--------------|
|  |  | Black/Black |
|  |  | Natural/Navy |
|  |  | Natural/Red |
|  |  | Navy/Navy |
|  |  | White/White |

Please Note:

Colors shown are approximate and for reference only. For closest match see PMS colors, or for exact match, returnable samples and grommated samples are available.

Color Chart

| Base Color | Black | Natural | Navy | White |
|-------------|-----------|-----------|-----------|-----------|
| Textile PMS | 19-4005TC | 11-0103TC | 19-4023TC | 11-0601TC |
| General PMS | 426C | No Match | 532C | No Match |
| Panel Color | Black | Navy | Red | White |
| Textile PMS | 19-4006TC | 19-4023TC | 18-1655TC | 11-0601TC |
| General PMS | 426C | 532C | 1805C | No Match |