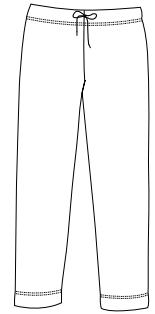
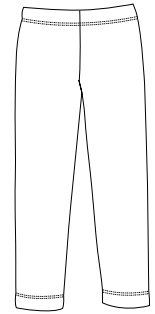


Ladies Sweatpant

Sport-Tek
By Port Authority®



Front



Back

L252

- * 9-ounce * 60/40 ring spun combed cotton/poly * Relaxed waistband
- * Drawcord * Open hem cuffs

Care Instructions:






Machine wash cold, wash with like colors.
Do not bleach. Tumble dry low.
Warm iron if necessary.

Finished Measurements in Inches

Size	XS	S	M	L	XL	XXL	Plus 1X	Plus 2X
Waist	15.5	16.75	18	19.25	20.5	21.75	23	24.25
Inseam	29.5	30	31	31	31.5	32	32.5	33
Cuff	8	8	8.5	8.5	9	9	9	9.5

Waist width measured relaxed. Inseam measured from crotch to bottom hem. Cuff width measured relaxed.

Colors

	Athletic Heather
	Black
	Light Blue
	Navy
	Pink

Please Note:

Colors shown are approximate and for reference only. For closest match see PMS colors, or for exact match, returnable samples and grommeted samples are available.

Color Chart

Colors	Athletic Heather	Black	Light Blue	Navy	Pink
Textile PMS	No Match	19-4203TC	15-3920TC	19-4010TC	13-28052TC
General PMS	No Match	Process Black	278C	532C	670C