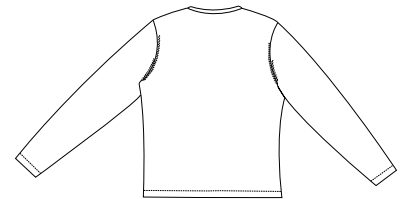


# Ladies Cardigan

PORT AUTHORITY®



Front



Back

## L360

- \* 7-ounce \* 95/5 cotton/spandex stretch fabric \* 1 x 1 rib construction
- \* 7-button cardigan placket \* Self-fabric binding at the hem and cuffs

### Care Instructions:





Machine wash cold with like colors.  
Do not bleach.  
Tumble dry low.  
Warm iron if necessary.

### Finished Measurements in Inches

Size	XS	S	M	L	XL	XXL	Plus 1X	Plus 2X
Chest	16	17	18	19	20.5	22	25	27
Body	22	22.5	23.5	24	24.5	25	29.5	31.2
Sleeve	23.125	23.375	23.625	23.875	24.125	24.375	23.5	23.5

Chest width measured 1" below arm hole. Body length measured from high point shoulder seam to hem.  
Sleeve length measured from shoulder seam to hem.

### Colors

	Black
	Light Blue
	Light Pink
	Red
	True Navy
	White
	Wine

### Please Note:

Colors shown are approximate and for reference only. For closest match see PMS colors, or for exact match, returnable samples and grommets samples are available.

### Color Chart

Color	Black	Light Blue	Light Pink	Red	True Navy	White	Wine
Textile PMS	19-4203TC	15-4020TC	12-1708TC	19-1762TC	19-3920TC	11-0601TC	19-1617TC
General PMS	Process Black	283C	706C	201C	533C	No Match	505C