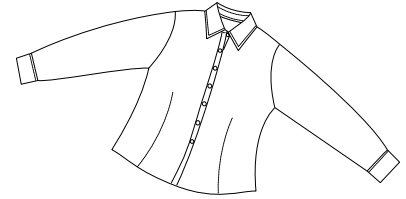
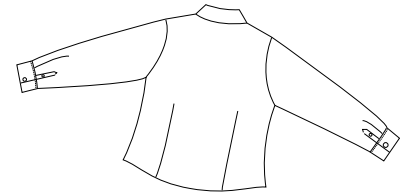


# Ladies Polynotic Slim Placket Shirt

PORT | AUTHORITY®



Front



Back

## L627

- \* 75/25 polynotic/poly
- \* Open collar
- \* 2 front darts
- \* 2 back darts
- \* Dyed-to-match pearlized buttons

### Care Instructions:



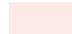

Machine wash cold with like colors.  
Tumble dry low.  
Do not bleach.  
Cool iron when needed.

### Finished Measurements in Inches

Size	XS	S	M	L	XL	XXL	Plus 1X	Plus 2X
Chest	18.75	19.75	21.25	22.75	25	26	27	30
Length	23.5	24.25	24.75	25.75	26	26.37	26.34	27.75
Sleeve	23.75	24	24.25	24.5	24.75	25.25	25.5	26

Chest width measured 1" below arm hole. Body length measured from back neck seam to hem.  
Sleeve length measured from shoulder seam to hem.

### Colors

	Black
	French Blue
	Pale Pink
	Silver
	White

### Please Note:

Colors shown are approximate and for reference only. For closest match see PMS colors, or for exact match, returnable samples and grommeted samples are available.

### Color Chart

Colors	Black	French Blue	Pale Pink	Silver	White
Textile PMS	19-4006TC	17-3922TC	12-2906TC	16-4702TC	11-0601TC
General PMS	Process Black	7454C	705C	429C	No Match