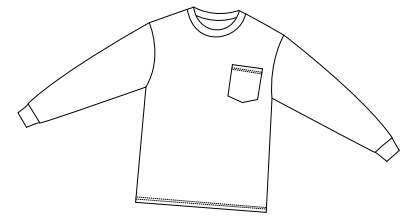
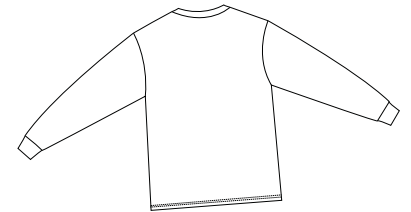


# 100% Cotton Long Sleeve T-Shirt with Pocket

PORT & COMPANY®



Front



Back

PC61LSP

- \* 6.1-ounce 100% cotton \* Taped shoulder to shoulder \* Coverseamed neck
- \* Double-needle and Bottom hem

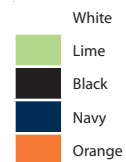
**Care Instructions:**  
Machine wash cold, inside out, with like colors. Only non-chlorine bleach when needed. Tumble dry medium. Medium-hot iron. Do not iron decoration.

## Finished Measurements in Inches

Size	S	M	L	XL	2XL	3XL	4XL
Neck	6.75	6.75	7.25	7.25	7.75	7.75	7.75
Width	18	20	22	24	26	28	30
Length	27	29	30	31	33	34	35
Sleeve	31.25	33.5	35.5	37.75	40	42.25	44.5
Pocket	5.12x4.5	5.12x4.5	5.12x4.5	5.12x4.5	5.12x4.5	5.12x4.5	5.12x4.5

Neck measured by width, seam to seam. Chest width measured 1" below arm hole. Pocket measured HxW. Body length measured from high point of shoulder to hem. Sleeve length measured from center back to hem.

## Colors



**Please Note:**  
Colors shown are approximate and for reference only. For closest match see PMS colors, or for exact match, returnable samples and grommets are available.

## Color Chart

Colors	Black	Lime	Navy	Orange	White
PMS	Process Black	367C	296C	172C	No Match