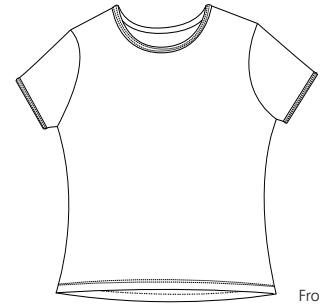
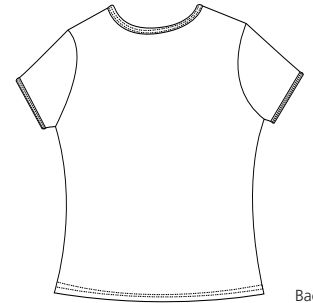


Classic Fit Rib T



Front



Back

S10C

- * 6.1-ounce * 100% ring spun combed cotton * 1 x 1 rib knit
- * Body circumference is 6" larger than fitted option SL10 and 1" longer

Care Instructions:

Machine wash cold.
Tumble Dry Low.
Non-chlorine bleach only.

Finished Measurements in Inches

Size	XS	S	M	L	XL	2XL	3XL
Body Width	17	18	19	21	22	23	24
Body Length	22.5	23.25	24	24.75	25.5	26.25	27
Sleeve Length	6	6.25	6.5	6.75	7	7.25	7.5

Chest width measured 1" below armhole. Body length measure from high point shoulder to hem.
Sleeve measured from shoulder seam to hem.

Colors

White

Colors

	Black
	Canary
	Heathered Sand
	Lavender
	Pink

Please Note:

Colors shown are approximate and for reference only. For closest match see PMS colors, or for exact match, returnable samples and grommited samples are available.

Color Chart

Colors	White	Black	Canary	Heather	Lavender	Pink	Storm Blue
Textile PMS	11-0601TC	19-4007TC	13-0746TC	No Match	14-3812TC	16-2126TC	19-4049TC
General PMS	No Match	Black 6	128C	No Match	2635C	211C	653C