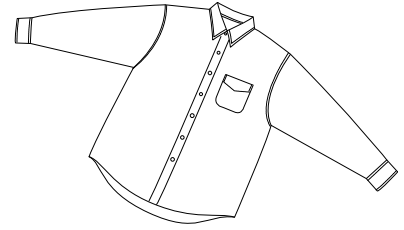
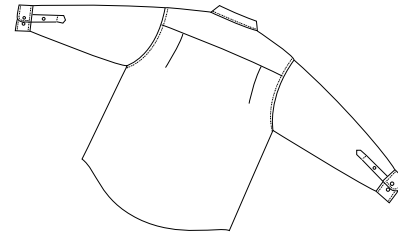


# Stretch Poplin Shirt

PORT AUTHORITY®  
SIGNATURE



Front



Back

## S620

- \* 98/2 cotton/spandex \* 2 back pleats \* Button-through sleeve plackets \* Adjustable cuffs
- \* Dyed-to-match pearlized buttons \* Hidden button-down collar \* Single patch pocket

### Care Instructions:

Machine wash cold with like colors.  
Tumble dry low.  
Do not bleach, do not dry clean.  
Warm iron if necessary.

### Finished Measurements in Inches

Sizes	XS	S	M	L	XL	2XL	3XL	4XL
Chest	20	21.5	23	25	27	28.5	30	31.5
Length	26.5	28.5	32	32.5	34	34.5	35.5	36
Sleeve	31	32.5	34.5	35.5	37	38	39	40
Collar	15.5	16	16.5	17	17.5	18	18.5	19
Pocket	4.5x5	4.5x5	4.62x5.12	4.62x5.12	4.62x5.12	4.62x5.12	4.87x5.37	4.87x5.37

Chest width measured 1" below arm hole. Body length measured from back neck seam to hem.  
Sleeve length measured from center back to hem. Collar measured by circumference. Pocket WxH.

### Colors

	Black
	Bordeaux
	Cypress
	Light Blue
	Mediterranean Blue
	Stone
	White

### Please Note:

Colors shown are approximate and for reference only. For closest match see PMS colors, or for exact match, returnable samples and grommeted samples are available.

### Color Chart

Colors	Black	Bordeaux	Cypress	Light Blue	Mediterranean Blue	Stone	White
Textile PMS	19-4203TC	19-1627TC	18-4011TC	15-3920TC	No Match	14-1106TC	11-0601TC
General PMS	Process Black	5115C	5487C	278C	No Match	7528C	No Match