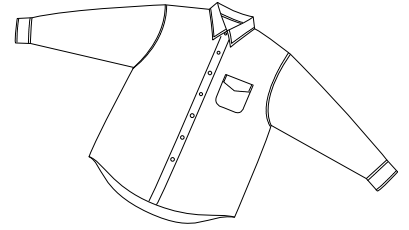
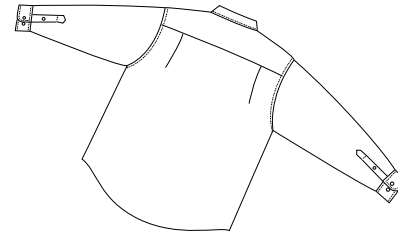


Lightweight Stretch Poplin Shirt

PORT AUTHORITY®



Front



Back

S626

- * Blended stretch poplin * 70/27/3 cotton/poly/spandex * Single patch pocket
- * Dyed-to-match pearlized buttons * Open collar with stays

Care Instructions:

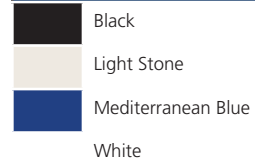
Machine wash cold with like colors.
Do not bleach. Do not dry clean.
Tumble dry low. Remove promptly.
Warm iron if necessary.

Finished Measurements in Inches

Size	XS	S	M	L	XL	2XL	3XL	4XL
Chest	20	21.5	23	24.5	26	27.5	29	30.5
Body	26.5	28.5	32	32.5	34	34.5	35.5	36
Sleeve	31	32.5	34.5	35.5	37	38	39	40
Collar	15.5	16	16.5	17	17.5	18	18.5	19
Pocket	5X5.5	5X5.5	5.25X6	5.25x6	5.25x6	5.25x6	5.5x6.25	5.5x6.25

Chest width measured 1" below arm hole. Body length measured from back neck seam to hem.
Sleeve length measured from center back to hem. Collar measured by circumference. Pocket WxH.

Colors



Please Note:

Colors shown are approximate and for reference only. For closest match see PMS colors, or for exact match, returnable samples and grommated samples are available.

Color Chart

Colors	Black	Light Stone	Mediterranean Blue	White
Textile PMS	19-4203TC	13-0905TC	No Match	11-0601TC
General PMS	Process Black	7527C	No Match	No Match