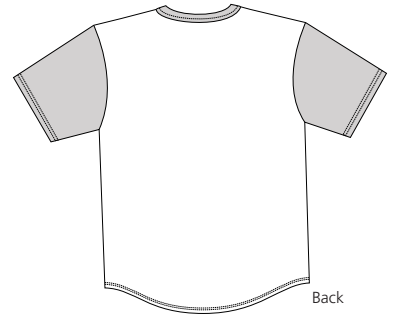
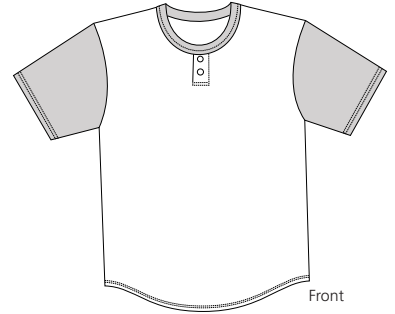


Colorblock Short Sleeve Henley

Sport-Tek
By Port Authority®



T215

- * 2-button placket * Dyed-to-match buttons * 5.8-ounce * 60/40 cotton/poly
- * Rib knit neck * Double-needle sleeve and bottom hem

Care Instructions:

Machine wash cold, gentile cycle.
Only non-chlorine bleach when needed.
Tumble dry low. Do not iron.

Finished Measurements in Inches

Size	XS	S	M	L	XL	2XL	3XL	4XL
Width	16	17.5	19.5	21.5	23.5	25.5	27.5	29.5
Length	27	28	29	30	31	32	33	34
Sleeve	8	8.5	9	9.5	10	10.5	11	11.5
Neck	6	6.5	7	7.5	8	8.5	9	9.5

Collar width measured from seam to seam. Chest width measured 1" below armhole.
Body length measured from high point shoulder to hem. Sleeve length measured from shoulder seam to hem.

Colors

	White/Black
	White/Forest
	White/Navy
	White/Red
	White/Royal

Please Note:

Colors shown are approximate and for reference only. For closest match see PMS colors, or for exact match, returnable samples and grommited samples are available.

Color Chart

Shirt Color	White				
Textile PMS	11-0601TC				
General PMS	No Match				
Colorblock	Black	Forest	Navy	Red	Royal
Textile PMS	19-4203TC	19-5513TC	19-3921TC	19-1764TC	19-4057TC
General PMS	Process Black	567C	533C	187C	541C