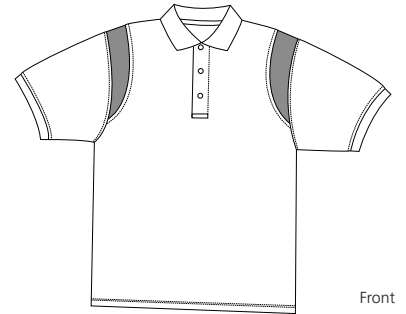
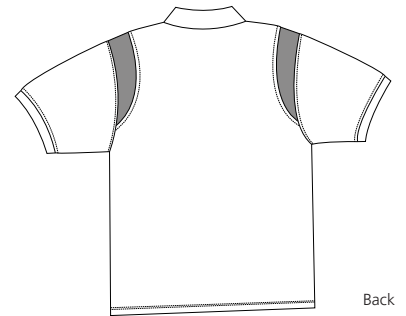


Pique Knit Sport Shirt with Shoulder Blaze

Sport-Tek
By Port Authority®



Front



Back

K477

- * 6.2-ounce * 100% ring spun combed cotton * Double-needle stitched throughout
- * Side vents * Side seams * Flat knit collar and cuffs
- * Metal buttons with dyed-to-match plastic rims

Care Instructions:

Machine wash cold with like colors.
Do not bleach.
Tumble dry low.
Warm iron if necessary.

Finished Measurements in Inches

Size	XS	S	M	L	XL	2XL	3XL	4XL
Width	19.5	20.5	21.5	23.5	25.5	27	28.5	30
Length	25.5	26.5	30	31	32	33	33.5	34
Sleeve	9	9.5	11	11.5	12	12.5	13	13.5
Neck	15.5	16	16.5	17	17.5	18	18.5	19

Chest width measured 1" below armhole. Body length measured from center back neck seam to hem.
Sleeve length measured from shoulder seam to hem. Neck measured by circumference.

Colors

	Black/Oxford
	Navy/White
	White/Oxford

Please Note:

Colors shown are approximate and for reference only. For closest match see PMS colors, or for exact match, returnable samples and grommets are available.

Color Chart

Colors	Black	Dark Green	Maroon
Textile PMS	19-4006tC	19-5414TC	19-1522TC
General PMS	Process Black	560C	229C
Colors	Black	Navy	Stone
Textile PMS	19-4006tC	19-4024TC	13-0711TC
General PMS	Process Black	533C	454C