

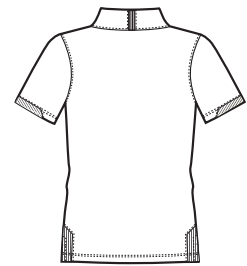


RED HOUSE

THE WINE COUNTRY LIFESTYLE



Front



Back



Care Instructions:
 Hand wash in cold.
 Do not bleach.
 Lay flat to dry.
 Cool iron if needed.

LADIES OTTOMAN PERFORMANCE POLO

RH52

A distinctive ottoman rib knit gives refined style while moisture-wicking performance delivers cooling confidence. Exceptional stretch for unencumbered movement. Contrast neck and side vent taping. Self-fabric collar, longer five-button placket and open hem sleeves. Red House engraved buttons and right sleeve Red House embroidery. 92/8 polyester/spandex.

Finished Measurements in Inches								
Size	XS	S	M	L	XL	2XL	3XL	4XL
Chest	18"	19"	20"	21 1/2"	23"	24 1/2"	26 1/2"	28 1/2"
Body	26"	26 1/2"	27"	28"	29"	30"	30 1/2"	31"
Sleeve	14"	14 1/2"	15"	15 3/4"	16 1/2"	17 1/4"	18 1/4"	19 1/4"

Chest measured 1" under arm hole. Body length measured from center back neck seam to hem.
 Sleeve measured from center back neck seam to hem. Shoulder width measured from arm hole to arm hole.
 Pocket measured WxH. Collar measured by circumference.

Colors	
	Black
	White
	Soft Blue
	Venetian Red
	Dress Blue Navy

Please Note:
 Colors shown are approximate and for reference only. For closest match see PMS colors, or for exact match, returnable samples and grommeted samples are available.

Color Chart					
Colors	Black	White	Soft Blue	Venetian Red	Dress Blue Navy
Textile PMS	19-1102TC	11-0601TC	No Match	No Match	No Match
General PMS	Process Black	663C	544C	711C	532C
Madiera (Tonal Emb)	1007	1071	No Match	No Match	No Match